

CAN DO Corporate Center

Site 18: Hillside Drive

For Sale: 15.75 Acres



CAN DO Corporate Center

Industrial site suited for:

- Light Industrial
- Manufacturing
- Distribution

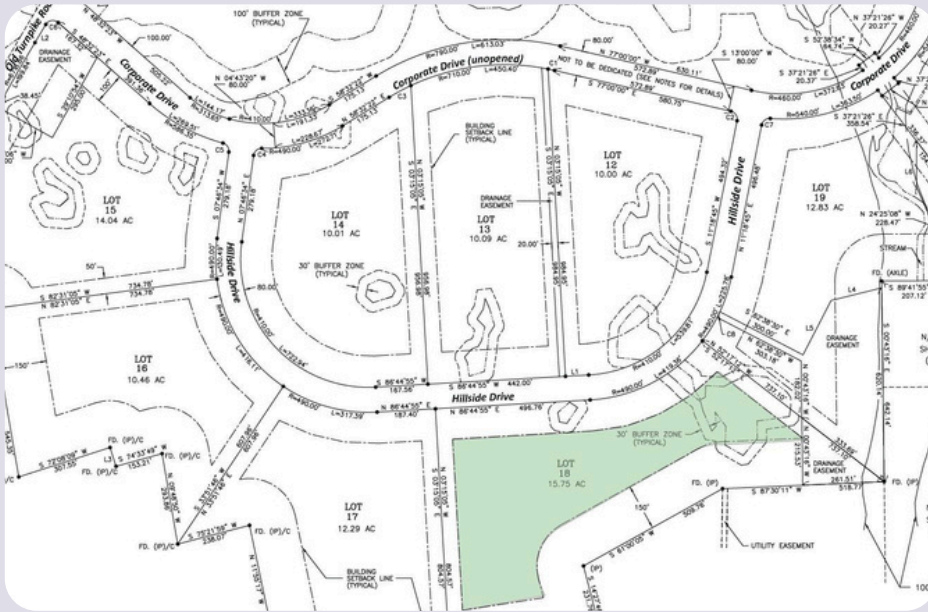


The CAN DO Corporate Center is located in Northeastern Pennsylvania adjacent to Interstate 80 and State Route 309. Just 2 miles to the junction of Interstates 80 & 81 and within a couple hours of New York & Philadelphia.



Site Details

Proposed Site Plan



Existing Utilities:

All utilities are to the property boundary.

Electric:

PPL Electric Utilities

Natural Gas:

UGI Utilities

Water & Sewer:

CAN DO, Inc.

Telecommunications:

Frontier Communications

• Services Offered:

- All transport services including but not limited to the following: Packet VX, Packet Optical, EIA/EVPL, 1B, PBX trunks, ISDN, PRI, Digital Centrex, ATM, Frame Relay, T-1 & T-3

• Available Bandwidth:

- T-1, T-3, OC3, OC12, OC48 (per customers request)
- Ethernet up to 1 Gig available early 2018

• Type of Service:

- 95% aerial, 2% buried, & 3% conduit
- Fiber and copper facilities serve this site

• Closest CO:

- 3000' from digital remote and the distance to the rate center (co) is 9 miles

Proximity to Interstate:

Adjacent to Interstates 80 and PA State Route 309. Directly off Exit 262, about two miles from the junction of I-80 and I-81, and about 15 miles west of the Northeast Extension of the PA Turnpike

Current Owner:

CAN DO, Inc.

Previous Site Use:

Undeveloped

Site Acreage:

15.75 acres

Site Description:

Gentle in topography and has a 30' buffer zone on the eastern boundary of the site.

Address:

Hillside Drive

Drums, PA 18222

Zoning:

Business Park

Business Park Neighbors:

Hazleton Area School District (Academy of Sciences & Arts & Humanities Academy), Amapharm, Best Cigar Prices, Best Cigar Pub, JPC Equestrian, Holiday Inn Express, Butler Township Municipal Offices

Contact CAN DO for more information

One South Church Street, Suite 200 Hazleton, PA 18201 | (570) 455-1508 | (570) 454-7787 fax | hazletoncando.com