

McAdoo Industrial Park

Site 1: McAdoo/Tresckow Road

For Sale: 19.02 Acres



McAdoo Industrial Park

Industrial site suited for:

- Manufacturing
- Distribution
- Warehouse

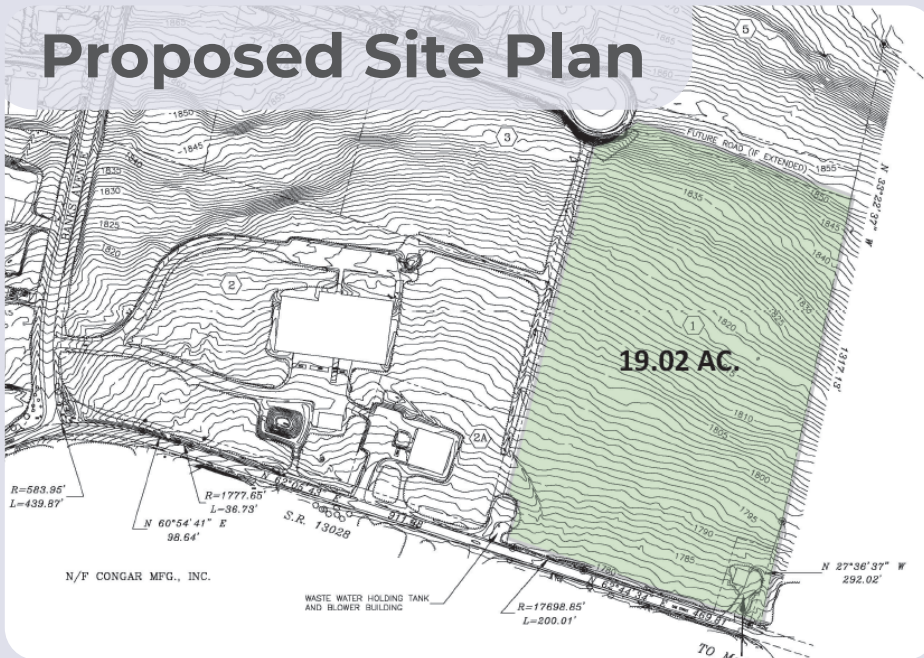


McAdoo Industrial Park is located right outside of Hazleton in Banks Township, Carbon County, just 3 miles from Exit 138 of Interstate 81 via SR 309. The industrial park has fully developed sites available with infrastructure already in place.



Site Details

Proposed Site Plan



Current Owner:
CAN DO, Inc.

Previous Site Use:
Undeveloped

Site Acreage:
19.02 acres

Address:
McAdoo/Tresckow Road (SR 1009)
McAdoo, PA 18237

Existing Utilities:
All utilities are located at the property boundary.

Electric:	PPL Utilities
Natural Gas:	UGI Utilities
Water:	CAN DO, Inc.
Sewer:	Kline Banks McAdoo Regional Authority Banks Township Municipicle Authority

Proximity to Interstate:
3 miles to Interstate 81, exit 138 through the Borough of McAdoo via State Route 309
10 miles to Interstate 80/81 Interchange

Proximity to Hub Airport:
40 miles from Wilke-Barre / Scranton International Airport
47 miles from Lehigh Valley International Airport

Zoning:
Industrial

Topography:
Site is gentle in topography

Neighboring Properties:
UTC Cargo (Haulmark Industries),
PSI Container, Altadis USA, High
Mountain Hardware, Fegley Vault

Contact CAN DO for more information

One South Church Street, Suite 200 Hazleton, PA 18201 | (570) 455-1508 | (570) 454-7787 fax | hazletoncando.com